

# Multi-compartmental biomaterial scaffolds for patterning neural tissue organoids in models of neurodevelopment and tissue regeneration

Journal of Tissue Engineering  
Volume 7: 1–8  
© The Author(s) 2016  
Reprints and permissions:  
sagepub.co.uk/journalsPermissions.nav  
DOI: 10.1177/2041731416671926  
tej.sagepub.com  


Richard J McMurtrey

## Abstract

Biomaterials are becoming an essential tool in the study and application of stem cell research. Various types of biomaterials enable three-dimensional culture of stem cells, and, more recently, also enable high-resolution patterning and organization of multicellular architectures. Biomaterials also hold potential to provide many additional advantages over cell transplants alone in regenerative medicine. This article describes novel designs for functionalized biomaterial constructs that guide tissue development to targeted regional identities and structures. Such designs comprise compartmentalized regions in the biomaterial structure that are functionalized with molecular factors that form concentration gradients through the construct and guide stem cell development, axis patterning, and tissue architecture, including rostral/caudal, ventral/dorsal, or medial/lateral identities of the central nervous system. The ability to recapitulate innate developmental processes in a three-dimensional environment and under specific controlled conditions has vital application to advanced models of neurodevelopment and for repair of specific sites of damaged or diseased neural tissue.

## Keywords

Tissue engineering, neural regeneration, cerebral organoids, three-dimensional stem cell culture, diffusion gradients

Date received: 30 July 2016; accepted: 7 September 2016

## Introduction

It has long been recognized that stem cells hold tremendous therapeutic potential for a variety of diseases and injuries, particularly for numerous ailments that have no effective treatments, but restoring tissue and organ functions with stem cells has also posed several challenges that remain to be overcome, including sufficient cell survival, development, and functional integration in native tissues. One approach for surmounting many of these limitations and significantly advancing capabilities of stem cells in therapeutic applications is the use of stem cells cultured in biomaterial architecture. Biomaterials offer numerous advantages and expand capabilities that generally cannot be achieved with stem cells alone, particularly in the case of implanting cells and reconstructing damaged tissue.

Biomaterials generally include natural or synthetic matrix molecules (or a modified combination of the two) that replicate aspects of innate extracellular matrix in

various tissues. This biomaterial scaffolding can serve many functions, such as supporting structural organization and patterning of cells, providing molecular and mechanical differentiation cues, arranging attachment points for cells and aiding anchorage-dependent survival, as well as preventing cells from being washed away from implantation sites in the body.<sup>1</sup> Many types of biomaterials have been shown to influence the survival and function of developing stem cells, and biomaterial designs can help replicate cellular interactions, matrix characteristics, biochemical

Institute of Neural Regeneration & Tissue Engineering, Highland, UT, USA

### Corresponding author:

Richard J McMurtrey, Institute of Neural Regeneration & Tissue Engineering, 5406 W I 1000 N Ste 103-215, Highland, UT 84003, USA.  
Email: richard.mcmurtrey@neuralregeneration.org



gradients, and signaling events that occur in the development, in addition to supporting cell survival, differentiation, and integration into innate tissue.

The suspension of stem cells in biomaterial polymers and aqueous media thus enables the formation of unique structures and functions found in many types of organ tissues. One example of this is cerebral organoids, where clusters of pluripotent stem cells are cultured in spheres of proteinaceous Matrigel to create numerous types of neural structures and cell types.<sup>2</sup> Three-dimensional (3D) hydrogel cultures of stem cells have been shown to enable the formation of other advanced anatomical structures, including various gastrointestinal, hepatic, pancreatic, renal, retinal, and neural tissues. The cells themselves appear to possess innately-programmed capabilities to self-assemble at least some aspects of important anatomical structures even in unpatterned hydrogel constructs. For example, neural tissue organoids have demonstrated various aspects of ventricular, hippocampal, retinal, spinal, and cortical regions, and such organoid constructs are being used to identify previously unknown mechanisms of neurological diseases like microcephaly, autism, neurodegenerative diseases, zika virus infection, and others<sup>2-6</sup> as well as to investigate normal tissue development.<sup>7-9</sup>

Importantly, the use of biomaterials in clinically relevant testing has also shown promise in enhancing cell survival and cell migration at the implantation site,<sup>10-12</sup> promoting a favorable regenerative environment,<sup>13</sup> and extending neural connectivity through neural lesions.<sup>14</sup> The presence of hydrogel materials loaded with neurotrophic factors and implanted in ischemic brain tissue can enhance cell survival, axonal sprouting, and migration of immature neuronal cells around the stroke area.<sup>12</sup> Thus, engineered tissues hold great potential in regenerative medicine, but one of the weaknesses of stem-cell-derived tissues is the lack of comprehensive control over specific regional identities, architectures, and cellular sub-specializations in the biomaterials. Accurate replication of complex structures like cortex, hippocampus, retina, tracts, or other neuroanatomy cannot yet be entirely controlled or achieved and each organoid may vary significantly in the resulting composition of cell types, structures, and self-organization patterns.

## Synthesis of form and function

Because a simple homogeneous biomaterial sphere is likely not sufficient to consistently guide all types of cellular self-organization and tissue patterning in organoids, advancing technologies seek to enable composite biomaterials to provide more detailed guidance of cellular architecture and identity. This may be accomplished through a variety of means. The architecture of a biomaterial construct, for example, can be formed with committed or restricted neural stem cells capable of forming diverse neuroglial subtypes, and the inclusion of patterned fiber scaffolds suspended in the biomaterial can guide and

enhance cell attachment and neurite outgrowth along the fibers.<sup>11,15</sup> Hydrogels functionalized with axonal guidance molecules may enhance cellular attachment, migration, differentiation, and axonal extension, and hydrogels seeded with diseased cells can replicate innate pathological features of diseases like Alzheimer's and Parkinson's disease.<sup>2-4,16</sup> Characteristics like biomaterial stiffness, density, and cross-linking capability can influence cell differentiation and function,<sup>17</sup> and a wide array of tissue types and cell states may be achieved with the choice of biomaterial, either by means of intrinsic cell signals or by means of various growth factors and differentiation factors that can be supplied within the biomaterials.

In addition, biomaterials may be designed to enhance the biocompatibility of tissue implants. Certain types of matrix molecules may inhibit inflammatory and scarring reactions that arise from disrupting tissue or introducing a foreign body into the tissue, either by interacting with cellular receptors or by absorbing and diffusing reactive cell signaling factors. If the biomaterial takes too long to degrade or has too great of stiffness compared with the innate tissue, it may trigger foreign body reactions that prevent functional integration of the implanted cells, and conversely, if the biomaterial degrades too quickly or is too soft or friable, it may not adequately support functional integration of implanted cells into the tissue. Thus, biomaterial polymers must be optimized to facilitate integration into host tissue, minimize foreign-body reactions, and enhance the permissive environment of the tissue.

## The role of diffusion

Recent research has suggested that the inherent diffusion limitations of gasses, nutrients, and signaling molecules through 3D tissue cultures can specifically affect cellular organization, differentiation state, and metabolic characteristics of cells.<sup>18</sup> While this phenomenon can impede important oxygen and nutrient delivery to cells in a 3D environment, it can also be advantageously used to replicate molecular concentration gradients in synthetic 3D tissue constructs. In other words, the biomaterial can serve to enclose and contain local regions with concentration gradients of certain factors in the construct that may be endogenously secreted by cells or that may be introduced artificially. Such a capability is vital for replicating innate gradients and cues that occur in early tissue development or that may play a role in certain pathological conditions, and by forming compartments of diffusing factors in the biomaterial construct, concentration gradients can be formed to drive stem cell differentiation and guide tissue development. These concentration gradients may be formed of trophic factors, migratory cues, neurite guidance signals, hormones, nutrients, or other factors that affect tissue patterning and cell identity at distinct regions of a tissue construct. Understanding these diffusion signals and processes will better help deliver specific controllable concentrations

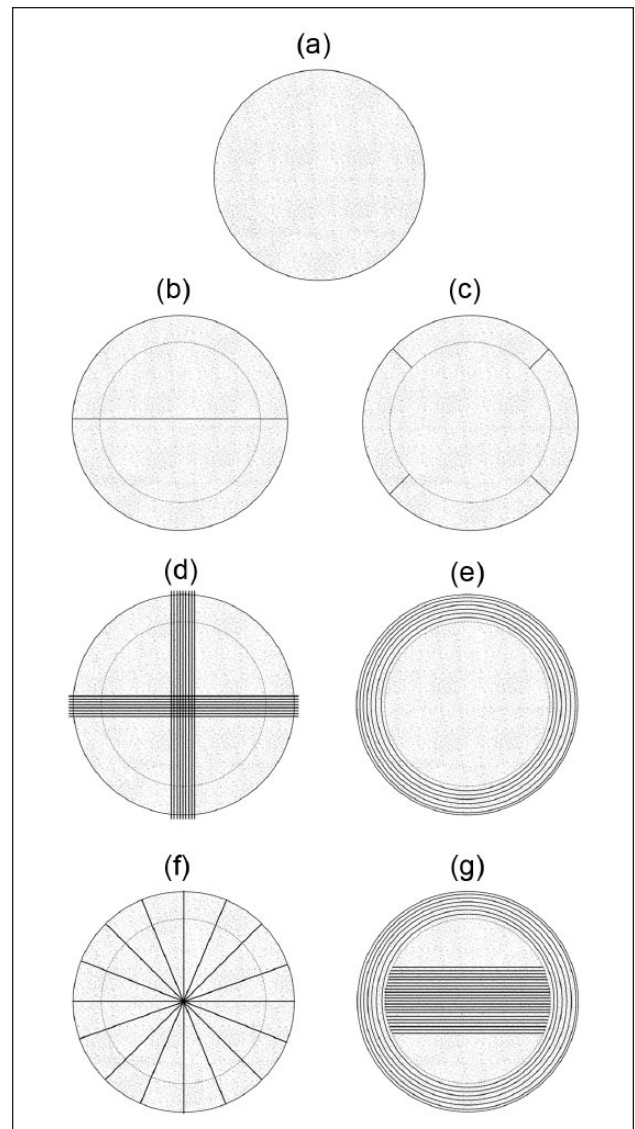
of ions, nutrients, and other factors to specific regions of the cellular tissue constructs, which in turn will enable tight control of cell state and differentiation processes. Evidence also suggests that stem cells implanted into the body may have better survival if they are cultured and prepared under certain conditions of hypoxic stress or ischemic exposure, a form of “preconditioning” the cells,<sup>19</sup> and culturing cells in 3D conditions with limited diffusion is one way of achieving the preconditioning effect for regenerative cell therapy applications.

### 3D biomaterial scaffolding designs

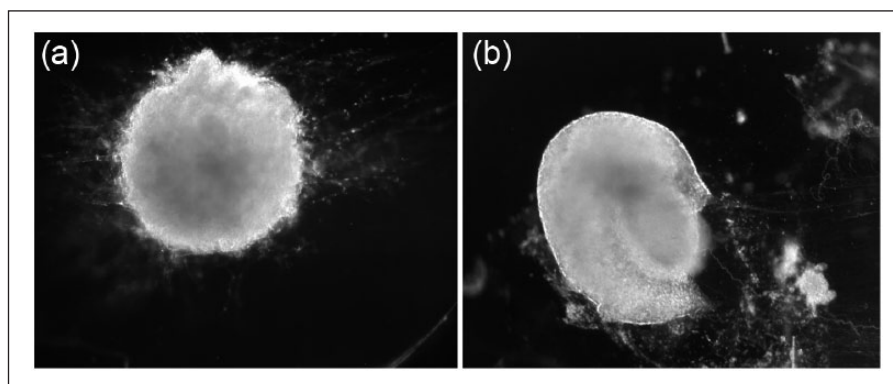
Several examples of 3D biomaterial designs are given herein that comprise distinct nanoarchitecture, functionalized compartments, and microgradients in the tissue construct (Figure 1). These designs provide detailed control of cell differentiation and tissue structure, and several examples are described demonstrating how certain innate neurodevelopmental cues can be mimicked in a 3D tissue construct (Figure 2) and how regional patterning of cortical tissue can be influenced with applied gradients of signaling factors (Figure 3).

Though appearing complicated, these designs may be constructed through relatively simple means. Biochemical signaling factors (which may include differentiation cues, patterning factors, axonal guidance molecules, growth factors, or others) are loaded or mixed into specific compartments of biomaterial hydrogel at desired initial concentrations, and these then diffuse and form specific concentration gradients through the biomaterial construct. These concentration gradient profiles of the signaling factors through the spatial coordinates of the construct over time were recently derived and published, including for scenarios of a limited supply of diffusant molecules (like certain signaling factors or glucose in media) or for an unlimited diffusant supply (like oxygen in culture), and with or without metabolism of the diffusant by cells in the 3D tissue construct.<sup>18</sup>

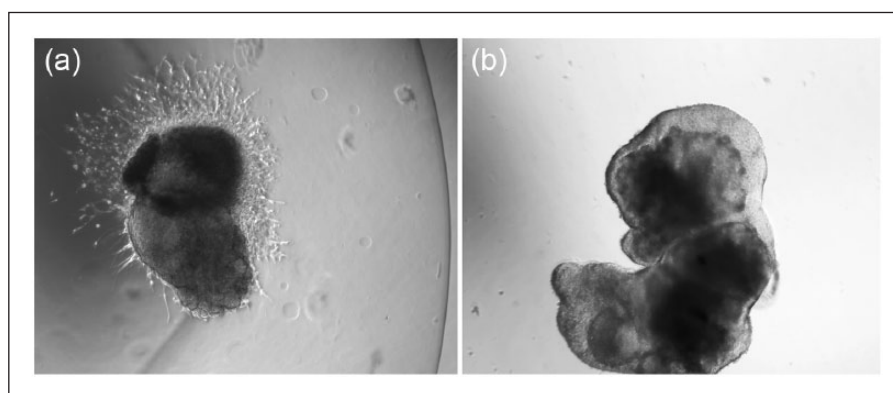
Functionalized nanofibers themselves may also be suspended within or through the 3D hydrogel (as in Figures 1(d)–(g)), the method of which has been described previously.<sup>15</sup> Functionalized fibers may also be rolled into the hydrogel (as in Figure 1(e)), and the biomaterial layers of the construct may be assembled in stages rather than all at once, for example, to add external signaling gradients at later time points in the culture. The nanofibers are functionalized by coating biochemical factors directly onto the polymer fibers. If coating by adsorptive methods, the factors may then diffuse from the fibers into the hydrogel compartments, or if coating by more permanent chemical coupling methods, guidance molecules or attachment domains remain bound to the polymer fibers. By exploring a variety of factors and arrangements, such constructs enable detailed study of what signals and structures are necessary and sufficient (and what signals are influential



**Figure 1.** Examples of various organoid scaffolding designs created with biomaterial hydrogels and polymer fibers: (a) standard organoid matrix droplet in which cellular spheroids are placed for organoid differentiation, (b–g) more complex designs with two or more distinct regions or polarized compartments in the biomaterial, such as where an external hydrogel layer is loaded with signaling molecules, growth factors, or functionalized fibers and then coated around the inner hydrogel sphere. Each compartment is used to create certain effects—for example, in (b) the upper compartment may be biochemically functionalized with rostral-inducing factors, while the lower compartment may be functionalized with caudal-inducing factors. As another example, in (c) the lower and upper compartments may be functionalized with ventral–dorsal directional gradients and the remaining central and outer compartments may be functionalized in a lateral–medial–lateral manner, as described in the text. The compartments of the hydrogel may be directly loaded with corresponding signaling factors to create concentration gradients, or the fibers or hydrogel polymers themselves may be functionalized with the desired signaling factor. Fibers are about a micron in diameter, while the tissue constructs are a few millimeters in diameter, and thus the figures are not to scale.



**Figure 2.** Functionalized nanofibers enable a greater variety of architectural formations in cerebral organoids grown from induced pluripotent stem cells (iPSCs): (a) sphere of neurally induced iPSCs beginning to migrate along functionalized nanofibers in a hydrogel and (b) hydrogel rolled with functionalized nanofibers resembling a folded cortex similar to the folding of the hippocampal formation.



**Figure 3.** The choice of biomaterial composition and molecular signaling factors produces different effects on spheroids of differentiating iPSCs: (a) dual phase spherical hydrogel with neural differentiation and prolific neurite outgrowth and (b) regionalized neuroepithelial development (seen as the more translucent layer around the tissue) in a biomaterial construct.

but non-essential) for neurodevelopmental processes like cell sub-specialization, axis patterning, regionalization, and architecture formation.

Biochemically active molecules that serve as differentiation and patterning factors can guide tissue construct polarization and axis patterning by being incorporated into specific regions of the hydrogel. Diffusive gradients of these factors can then be established in a similar orientation to innate biochemical gradients that are known to influence developmental processes in central neural tissue. For example, in the brain and spinal cord, ventralization effects and the corresponding neural and astroglial identities may be achieved by incorporating ventralization factors like sonic hedgehog (SHH) protein, smoothened agonist (SAG), or purmorphamine into a hydrogel compartment.<sup>20–23</sup> Fibroblast growth factor 8 (FGF-8) can be added to induce midbrain dopaminergic identity.<sup>24–26</sup> Dorsalization effects in the tissue construct may likewise be achieved with “wnt” protein (WNT), bone morphogenetic protein 4 (BMP-4), cyclopamine, or others. WNT actually plays a complex role and may help to induce

certain dorsalization, caudalization, or ventralization effects depending on the context.<sup>22,27–32</sup> Similarly, the family of FGFs can play varied roles in caudalization, rostralization, ventralization, and dorsalization.<sup>33–35</sup> Other small molecule inhibitors of the above-mentioned pathways can also be used to divert commitment toward opposite fates—for example, while WNT, BMP, and nodal can induce caudal fates, WNT inhibitors, BMP inhibitors, and nodal inhibitors may be implemented to drive a rostral fate. Thus, signaling molecule gradients in synthetic forms can be used to recapitulate the natural directional gradients of SHH, WNT, BMP, and FGFs that are essential in proper neural tissue development.

Most regionalization factors, however, cannot simply be partitioned into clear categorical effects since they have interacting effects and depend substantially on timing, concentration, and cell state. For example, over decades of research work on neurodevelopment, it was found that endogenous inhibition of the BMP molecule was required for the formation of neural cells from the early ectodermal layer in many developing species from amphibians to



mammals.<sup>36,37</sup> Through the 1990s and early 2000s, it was found that inhibitors of BMP signaling (such as dorsomorphin, noggin, chordin, and follistatin) as well as inhibitors of transforming growth factor (TGF)- $\beta$  (such as SB-431542) could be used in the culture of stem cells to promote neural differentiation. Further research suggested that these signaling pathways, while necessary for neural induction, were not entirely sufficient. More complex roles were found for FGF signaling, WNT signaling, and retinoic acid (RA) signaling, each of which could influence neural differentiation based on the timing and concentration of signaling factors.<sup>2,38–40</sup> FGF signaling has some downstream effects on inhibiting BMP and SMAD family member proteins, but FGF also produces a neural fate independently of BMP or SMAD modulation.<sup>38</sup> FGF appears to have numerous effects, including promoting neural induction, promoting proliferation of neural stem cells, promoting a caudal fate, and, if the cells have already committed to a cerebral fate, promoting a ventral forebrain identity.<sup>41</sup>

RA can also induce neuroglial lineage in the brain,<sup>42</sup> with high concentrations tending to produce neurons that are representative of the caudal portion of the brain and spinal cord<sup>41,43,44</sup> (similar to the caudalizing effects of FGF-2), although again its effects depend on concentration, timing, and current state of the cells. Early exposure of neural progenitor cells to high levels of RA tends to promote posteriorization, while activation of SHH signaling promotes ventralization. It has been found that RA can promote SHH activity, and gradients of both RA and SHH are important for the induction of the “floor plate,” a tissue structure at the front of the neural tube that helps signal ventral–dorsal patterning of the cells within the cord. In the spinal cord, these factors are influential in driving ventral motor neuron identity and central interneuron identity.<sup>7</sup> RA also interacts with WNT by altering gene promoter assembly and activating alternate, non-canonical WNT pathways (such as differentiation signals) rather than canonical WNT pathways (such as maintenance of stemness).<sup>45</sup>

During development the meningeal layers that surround the brain play a significant role in neurodevelopment by providing RA signaling and chemoattractant signals that aid outer attachment of radial glial fibers and by promoting the migration of neural cells to the cortex.<sup>2,46,47</sup> The dura, which is the most outer layer of the meninges, also secretes FGF-2 and TGF- $\beta$ -related molecules that aid in the initiation of bone plates that become the skull. As neural stem cells migrate from central progenitor regions along spoke-like radial glia to populate the outer rims that will become cortex, network connections both near and far also begin to form.

Also early in the development of the brain, reelin is expressed and secreted from Cajal-Retzius neurons, which are the primary cells found in the outer layer I of the early-developing cortex. It is thought that reelin helps guide radial glia fibers to extend outwardly toward the edges of

the brain where cortex and hippocampus will eventually be formed,<sup>48–53</sup> and reelin enables neurons and neural progenitors to release from radial glia fibers and migrate throughout the cortex.<sup>51,54,55</sup> It has also been shown that reelin is essential for neuronal positioning in cortex and spinal cord,<sup>51,56</sup> where cortical and hippocampal fibers orient along the reelin gradient.<sup>48,53</sup> A lack of reelin causes lissencephaly or agyria, likely due to the fact that radial glia scaffolding that neurons rely on for migration to the cortex is deformed and cannot provide the proper guide for neural precursors.<sup>49,50,52</sup>

Reelin has also been implicated in diseases like Alzheimer's, epilepsy, schizophrenia, and other disorders.<sup>57–61</sup> The mechanisms involved are varied, but appear to involve interactions among reelin-responsive domains in apolipoprotein E receptors and very low-density lipoprotein receptors, which have been shown to be involved in radial migration of neuronal precursors and detachment of such precursors from migratory chains.<sup>62</sup> Reelin also can promote dendritic growth and strengthen long-term potentiation by influencing N-methyl-D-aspartate (NMDA) receptors,<sup>63–68</sup> and it is thought that reelin increases the mobilization of the NMDA receptors such that they “float” among the lipid molecules of the membrane rather than being anchored to the architecture of the cell. The ability to influence membrane mobility allows reelin to control subunit expression within NMDA receptors after early development,<sup>69</sup> and this may allow the NMDA receptor to mature more quickly since the maturation of the NMDA receptor involves replacing the NR2B subunit with the NR2A subunit.<sup>70</sup>

As brain development proceeds, signals that control area specification continue in complexity, and the cells of the brain not only possess the machinery for all the extraordinary functions of thought and memory, but also the incredible capability to self-organize and assemble its complex pathways and networks. Numerous transcription factors determine finely detailed patterns of brain development and spatial identity. One of the more simple examples from this complexity is found in the dueling roles of *Emx2* and *Pax6*. In the 3D environment of the brain, *Emx2* directs the development of the caudal–medial region, while *Pax6* directs the rostral–lateral region of the cortex. Each of these factors inhibits the other, thereby making a strong gradient of *Pax6* in one region and a strong gradient of *Emx2* in the opposite region. If either one of these factors is inactive or mutated, the cortical region it is responsible for will be underdeveloped and the opposing region will overgrow.<sup>71–73</sup> Expression of both *Pax6* and *Emx2* is strongly influenced by concentrations of previously mentioned factors like SHH (which represses *Pax6*) and FGFs (like FGF-8 which represses *Emx2*),<sup>33,74,75</sup> meaning that although simple regional gradients can be generated in organoid constructs, additional downstream gradients of signaling factors may complicate or interweave with intended results.

As can be seen, investigating the function of just a single type of diffusing signaling factor in the brain can be quite complex, meaning that assembling the roles of thousands of possible variations is a daunting task, but the advent of these 3D tissue designs enables a platform for controlled study of individual factors in neural development and disease. Recent work suggests that the cortex has at least 180 distinct and conserved areas,<sup>76</sup> the identities and structures of which must be shaped from a variety of signaling cues. The ability to replicate these innate neurodevelopmental processes and three-dimensional compositions in the lab with known gradients and localized concentrations of molecular signaling factors is essential for directed specification and accurate study of stem cell development and thus vital to the targeted regeneration of functional neural tissue.

## Conclusion

When attempting to design ideal cellular constructs for implantation, numerous aspects must be carefully considered in the context of the specific tissue type and the desired functional effects. Restoring function in tissues and organs—whether brain, heart, lung, liver, kidney, nerve, muscle, or other tissues—is likely to require integrating and reconstructing functional architecture of the tissue rather than simply implanting isolated cells. Recent stem cell research has therefore focused on the application of biomaterials along with stem cells to enable desired patterning and organization of more accurate and complete tissue structures. The tissue construct designs presented herein enable an array of important investigations in tissue development, disease mechanisms, environmental toxicologies, and regenerative medicine applications.

Nevertheless, much research remains to be done on the optimal combinations of biomaterials, signaling factors, and scaffolding architectures needed to optimally prepare cells for transplantation and integration into specific tissues of the body. This work describes novel biomaterial designs for controlling critical processes of neurodevelopment, within which molecular signaling gradients may be established according to physical diffusion models. It is not yet known to what extent neural networks can be functionally established in 3D tissue constructs, or whether 3D architecture can be integrated into the prohibitive *in vivo* central nervous system environment, but the ability to accurately replicate neuroanatomical structures and guide neural network formation in three dimensions, both *in vitro* and *in vivo*, will produce major advances in the field of neural regeneration.

## Declaration of conflicting interests

The author(s) declared no potential conflicts of interest with respect to the research, authorship, and/or publication of this article.

## Funding

The author(s) received no financial support for the research, authorship, and/or publication of this article.

## References

1. McMurtrey RJ. Novel advancements in three-dimensional neural tissue engineering and regenerative medicine. *Neural Regen Res* 2015; 10(3): 352–354.
2. Lancaster MA, Renner M, Martin CA, et al. Cerebral organoids model human brain development and microcephaly. *Nature* 2013; 501(7467): 373–379.
3. Mariani J, Coppola G, Zhang P, et al. FOXP1-dependent dysregulation of GABA/glutamate neuron differentiation in autism spectrum disorders. *Cell* 2015; 162(2): 375–390.
4. Choi SH, Kim YH, Hebisch M, et al. A three-dimensional human neural cell culture model of Alzheimer's disease. *Nature* 2014; 515(7526): 274–278.
5. Dang J, Tiwari SK, Lichinchi G, et al. Zika virus depletes neural progenitors in human cerebral organoids through activation of the innate immune receptor TLR3. *Cell Stem Cell* 2016; 19: 258–265.
6. Mullard A. Stem-cell discovery platforms yield first clinical candidates. *Nat Rev Drug Discov* 2015; 14(9): 589–591.
7. Meinhardt A, Eberle D, Tazaki A, et al. 3D reconstitution of the patterned neural tube from embryonic stem cells. *Stem Cell Rep* 2014; 3(6): 987–999.
8. Kelava I and Lancaster MA. Stem cell models of human brain development. *Cell Stem Cell* 2016; 18(6): 736–748.
9. Wang L, Hou S and Han YG. Hedgehog signaling promotes basal progenitor expansion and the growth and folding of the neocortex. *Nat Neurosci* 2016; 19(7): 888–896.
10. Moshayedi P and Carmichael ST. Hyaluronan, neural stem cells and tissue reconstruction after acute ischemic stroke. *Biomatter* 2013; 3(1): e23863
11. Carlson AL, Bennett NK, Francis NL, et al. Generation and transplantation of reprogrammed human neurons in the brain using 3D microtopographic scaffolds. *Nat Commun* 2016; 7: 10862.
12. Cook DJ, Nguyen C, Chun HN, et al. Hydrogel-delivered brain-derived neurotrophic factor promotes tissue repair and recovery after stroke. *J Cereb Blood Flow Metab*. Epub ahead of print 12 May 2016. DOI: 0.1177/0271678X16649964.
13. Hakim JS, Esmaili Rad M, Grahn PJ, et al. Positively charged oligo[poly(ethylene glycol) fumarate] scaffold implantation results in a permissive lesion environment after spinal cord injury in rat. *Tissue Eng. Pt A* 2015; 21(13–14): 2099–2114.
14. Lu P, Wang Y, Graham L, et al. Long-distance growth and connectivity of neural stem cells after severe spinal cord injury. *Cell* 2012; 150(6): 1264–1273.
15. McMurtrey RJ. Patterned and functionalized nanofiber scaffolds in 3-dimensional hydrogel constructs enhance neurite outgrowth and directional control. *J Neural Eng* 2014; 11: 066009.
16. Carballo-Molina OA, Sánchez-Navarro A, López-Ornelas A, et al. Semaphorin 3C released from a biocompatible hydrogel guides and promotes axonal growth of rodent and human dopaminergic neurons. *Tissue Eng Pt A* 2016; 22(11–12): 850–861.

17. Aurand ER, Lampe KJ and Bjugstad KB. Defining and designing polymers and hydrogels for neural tissue engineering. *Neurosci Res* 2012; 72: 199–213.
18. McMurtrey RJ. Analytic models of oxygen and nutrient diffusion, metabolism dynamics, and architecture optimization in three-dimensional tissue constructs with applications and insights in cerebral organoids. *Tissue Eng Pt C: Met* 2016; 22(3): 221–249.
19. Sart S, Ma T and Yan Li Y. Preconditioning stem cells for in vivo delivery. *Biores Open Access* 2014; 3: 137–149.
20. Komada M, Saitsu H, Kinboshi M, et al. Hedgehog signaling is involved in development of the neocortex. *Development* 2008; 135(16): 2717–2727.
21. Chi L, Fan B, Feng D, et al. The dorsoventral patterning of human forebrain follows an activation/transformation model. *Cereb Cortex*. Epub ahead of print 25 May 2016. DOI: 10.1093/cercor/bhw152.
22. Le Dréau G and Martí E. Dorsal-ventral patterning of the neural tube: a tale of three signals. *Dev Neurobiol* 2012; 72(12): 1471–1481.
23. Dessaud E, McMahon AP and Briscoe J. Pattern formation in the vertebrate neural tube: a sonic hedgehog morphogen-regulated transcriptional network. *Development* 2008; 135(15): 2489–2503.
24. Crossley PH, Martinez S and Martin GR. Midbrain development induced by FGF8 in the chick embryo. *Nature* 1996; 380(6569): 66–68.
25. Ye W, Shimamura K, Rubenstein JL, et al. FGF and Shh signals control dopaminergic and serotonergic cell fate in the anterior neural plate. *Cell* 1998; 93(5): 755–766.
26. Tieng V, Stoppini L, Villy S, et al. Engineering of midbrain organoids containing long-lived dopaminergic neurons. *Stem Cells Dev* 2014; 23(13): 1535–1547.
27. Nordström U, Jessell TM and Edlund T. Progressive induction of caudal neural character by graded Wnt signaling. *Nat Neurosci* 2002; 5(6): 525–32.
28. Lagutin OV, Zhu CC, Kobayashi D, et al. Six3 repression of Wnt signaling in the anterior neuroectoderm is essential for vertebrate forebrain development. *Genes Dev* 2003; 17(3): 368–379.
29. Irioka T, Watanabe K, Mizusawa H, et al. Distinct effects of caudalizing factors on regional specification of embryonic stem cell-derived neural precursors. *Brain Res Dev Brain Res* 2005; 154(1): 63–70.
30. Andoniadou CL and Martinez-Barbera JP. Developmental mechanisms directing early anterior forebrain specification in vertebrates. *Cell Mol Life Sci* 2013; 70(20): 3739–3752.
31. Azim K, Fischer B, Hurtado-Chong A, et al. Persistent Wnt/ $\beta$ -catenin signaling determines dorsalization of the postnatal subventricular zone and neural stem cell specification into oligodendrocytes and glutamatergic neurons. *Stem Cells* 2014; 32(5): 1301–1312.
32. Kiecker C and Niehrs C. A morphogen gradient of Wnt/ $\beta$ -catenin signalling regulates anteroposterior neural patterning in *Xenopus*. *Development* 2001; 128(21): 4189–4201.
33. Cholfin JA and Rubenstein JL. Frontal cortex subdivision patterning is coordinately regulated by Fgf8, Fgf17, and Emx2. *J Comp Neurol* 2008; 509(2): 144–155.
34. Liu DX and Greene LA. Regulation of neuronal survival and death by E2F-dependent gene repression and derepression. *Neuron* 2001; 32(3): 425–438.
35. Kengaku M, Okamoto H. bFGF as a possible morphogen for the anteroposterior axis of the central nervous system in *Xenopus*. *Development* 1995; 121(9): 3121–3130.
36. Linker C and Stern CD. Neural induction requires BMP inhibition only as a late step, and involves signals other than FGF and Wnt antagonists. *Development* 2004; 131(22): 5671–5681.
37. Levine AJ and Brivanlou AH. Proposal of a model of mammalian neural induction. *Dev Biol* 2007; 308(2): 247–256.
38. Stern CD. Neural induction: old problem, new findings, yet more questions. *Development* 2005; 132(9): 2007–2021.
39. Shi Y, Kirwan P, Smith J, et al. Human cerebral cortex development from pluripotent stem cells to functional excitatory synapses. *Nat Neurosci* 2012; 15(3): 477–486.
40. Al Oustah A, Danesin C, Khouri-Farah N, et al. Dynamics of sonic hedgehog signaling in the ventral spinal cord are controlled by intrinsic changes in source cells requiring sulfatase 1. *Development* 2014; 141(6): 1392–1403.
41. Hansen DV, Rubenstein JL and Kriegstein AR. Deriving excitatory neurons of the neocortex from pluripotent stem cells. *Neuron* 2011; 70(4): 645–660.
42. Maden M. Role and distribution of retinoic acid during CNS development. *Int Rev Cytol* 2001; 209: 1–77.
43. Barth KA, Kishimoto Y, Rohr KB, et al. Bmp activity establishes a gradient of positional information throughout the entire neural plate. *Development* 1999; 126(22): 4977–4987.
44. Kudoh T, Wilson SW and Dawid IB. Distinct roles for Fgf, Wnt and retinoic acid in posteriorizing the neural ectoderm. *Development* 2002; 129(18): 4335–4346.
45. Osei-Sarfo K and Gudas LJ. Retinoic acid suppresses the canonical Wnt signaling pathway in embryonic stem cells and activates the noncanonical Wnt signaling pathway. *Stem Cells* 2014; 32(8): 2061–2071.
46. Radakovits R, Barros CS, Belvindrah R, et al. Regulation of radial glial survival by signals from the meninges. *J Neurosci* 2009; 29(24): 7694–7705.
47. Siegenthaler JA, Ashique AM, Zarbalis K, et al. Retinoic acid from the meninges regulates cortical neuron generation. *Cell* 2009; 139(3): 597–609.
48. Nomura T, Takahashi M, Hara Y, et al. Patterns of neurogenesis and amplitude of Reelin expression are essential for making a mammalian-type cortex. *PLoS ONE* 2008; 3(1): e1454.
49. Förster E, Tielsch A, Saum B, et al. Disabled 1, and beta 1 integrins are required for the formation of the radial glial scaffold in the hippocampus. *Proc Natl Acad Sci U S A* 2002; 99(20): 13178–13183.
50. Frotscher M, Haas CA and Förster E. Reelin controls granule cell migration in the dentate gyrus by acting on the radial glial scaffold. *Cereb Cortex* 2003; 13(6): 634–640.
51. Hartfuss E, Förster E, Bock HH, et al. Reelin signaling directly affects radial glia morphology and biochemical maturation. *Development* 2003; 130(19): 4597–609.
52. Zhao S, Chai X, Förster E, et al. Reelin is a positional signal for the lamination of dentate granule cells. *Development* 2004; 131(20): 5117–5125.
53. Del Río JA, Heimrich B, Borrell V, et al. A role for Cajal-Retzius cells and reelin in the development of hippocampal connections. *Nature* 1997; 385(6611): 70–74.

54. Hack I, Bancila M, Loulier K, et al. Reelin is a detachment signal in tangential chain-migration during postnatal neurogenesis. *Nat Neurosci* 2002; 5(10): 939–945.
55. Kim HM, Qu T, Kriho V, et al. Reelin function in neural stem cell biology. *Proc Natl Acad Sci U S A* 2002; 99(6): 4020–4025.
56. Yip YP, Mehta N, Magdaleno S, et al. Ectopic expression of reelin alters migration of sympathetic preganglionic neurons in the spinal cord. *J Comp Neurol* 2009; 515(2): 260–268.
57. Durakoglugil MS, Chen Y, White CL, et al. Reelin signaling antagonizes beta-amyloid at the synapse. *Proc Natl Acad Sci U S A* 2009; 106(37): 15938–15943.
58. Crino P. New RELN mutation associated with Lissencephaly and Epilepsy. *Epilepsy Curr* 2001; 1(2): 72.
59. Impagnatiello F, Guidotti AR, Pesold C, et al. A decrease of reelin expression as a putative vulnerability factor in schizophrenia. *Proc Natl Acad Sci U S A* 1998; 95(26): 15718–15723.
60. Guidotti A, Auta J, Davis JM, et al. Decrease in reelin and glutamic acid decarboxylase67 (GAD67) expression in schizophrenia and bipolar disorder: a postmortem brain study. *Arch Gen Psychiatry* 2000; 57(11): 1061–1069.
61. Grayson DR, Jia X, Chen Y, et al. Reelin promoter hypermethylation in schizophrenia. *Proc Natl Acad Sci U S A* 2005; 102(26): 9341–9346.
62. Blake SM, Strasser V, Andrade N, et al. Thrombospondin-1 binds to ApoER2 and VLDL receptor and functions in postnatal neuronal migration. *EMBO J* 2008; 27(22): 3069–3080.
63. Groc L, Choquet D, Stephenson FA, et al. NMDA receptor surface trafficking and synaptic subunit composition are developmentally regulated by the extracellular matrix protein Reelin. *J Neurosci* 2007; 27(38): 10165–10175.
64. Niu S, Renfro A, Quattrocchi CC, et al. Reelin promotes hippocampal dendrite development through the VLDLR/ApoER2-Dab1 pathway. *Neuron* 2004; 41(1): 71–84.
65. Niu S, Yabut O and D’Arcangelo G. The Reelin signaling pathway promotes dendritic spine development in hippocampal neurons. *J Neurosci* 2008; 28(41): 10339–10348.
66. Sinagra M, Verrier D, Frankova D, et al. Reelin, very-low-density lipoprotein receptor, and apolipoprotein E receptor 2 control somatic NMDA receptor composition during hippocampal maturation in vitro. *J Neurosci* 2005; 25(26): 6127–6136.
67. Weeber EJ, Beffert U, Jones C, et al. Reelin and ApoE receptors cooperate to enhance hippocampal synaptic plasticity and learning. *J Biol Chem* 2002; 277(42): 39944–39952.
68. D’Arcangelo G. Apoer2: a reelin receptor to remember. *Neuron* 2005; 47(4): 471–473.
69. Campo CG, Sinagra M, Verrier D, et al. Reelin secreted by GABAergic neurons regulates glutamate receptor homeostasis. *PLoS ONE* 2009; 4(5): e5505.
70. Lopez de Armentia M and Sah P. Development and subunit composition of synaptic NMDA receptors in the amygdala: NR2B synapses in the adult central amygdala. *J Neurosci* 2003; 23(17): 6876–6883.
71. Bishop KM, Rubenstein JL and O’Leary DD. Distinct actions of Emx1, Emx2, and Pax6 in regulating the specification of areas in the developing neocortex. *J Neurosci* 2002; 22(17): 7627–7638.
72. Muzio L and Mallamaci A. Emx1, emx2 and pax6 in specification, regionalization and arealization of the cerebral cortex. *Cereb Cortex* 2003; 13(6): 641–647.
73. Cecchi C. Emx2: a gene responsible for cortical development, regionalization and area specification. *Gene* 2002; 291(1–2): 1–9.
74. Shimamura K and Rubenstein JL. Inductive interactions direct early regionalization of the mouse forebrain. *Development* 1997; 124(14): 2709–2718.
75. Grove EA and Fukuchi-Shimogori T. Generating the cerebral cortical area map. *Annu Rev Neurosci* 2003; 26: 355–380.
76. Glasser MF, Coalson TS, Robinson EC, et al. A multimodal parcellation of human cerebral cortex. *Nature* 2016; 536: 171–178.